



Static Inline Mixer KD28



Static Inline Mixer KD28

The Static Inline Mixer KD 28, is a newly developed static mixer. The mixer assures homogeneous sludge and polymer in order to achieve the best possible drainage parameters.

The Inline Mixer is built in a tube, which is equipped with DIN flanges. The supply of polymer takes place through a tube ending in the centre of the mixer in such a way that the polymer is added in the middle of the sludge stream, and 20/12 guard plates (obstructions) are mounted for the correct blending of sludge and polymer by constantly changing the direction of the flow.

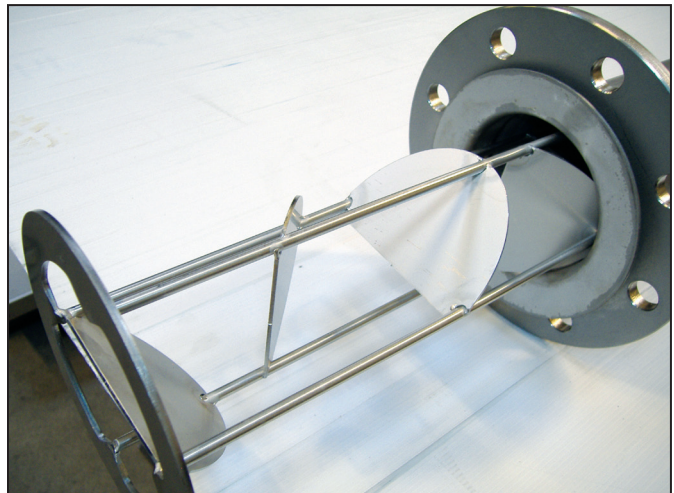
The inline mixer can be separated by pulling the obstruction itself out of the tube in order to make it possible to carry out an easy cleaning in case of blockage.

Advantages:

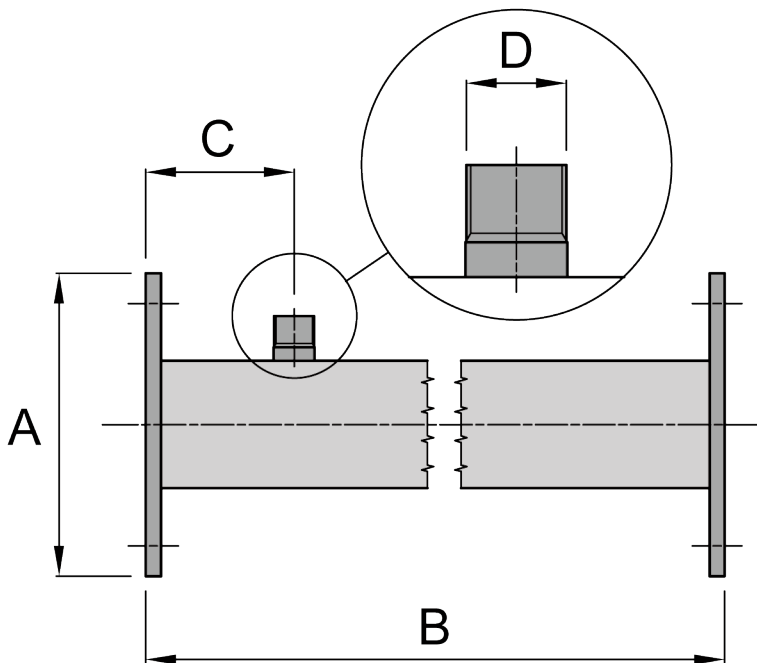
- Low investment costs
- No operating cost
- Homogeneous distribution of the polymer
- Easily demounted for cleaning.



KD 28-X



KD 28-V



	DN32	DN40	DN50	DN 65	DN 80	DN 100	DN 125	DN 150	DN 200
Model X	x	x	x	x	x	x	x	x	x
Model V	-	-	-	-	x	x	x	x	x
B - X	400 mm	500 mm	600 mm	750 mm	900 mm	1100 mm	1350 mm	1600 mm	2100 mm
B - V	-	-	-	-	900 mm	1200 mm	1450 mm	1700 mm	2200 mm
C	100 mm	100 mm	100 mm	100 mm	100 mm	100 mm	100 mm	100 mm	100 mm
D	¼" RG	⅜" RG	⅜" RG	½" RG	¾" RG	1" RG	1¼" RG	1½" RG	2" RG

Specifications:

Type of steel	Stainless steel EN1.4301
Surface treatment	Dip-pickled

Other connections can be made upon request.

03.2014.GB